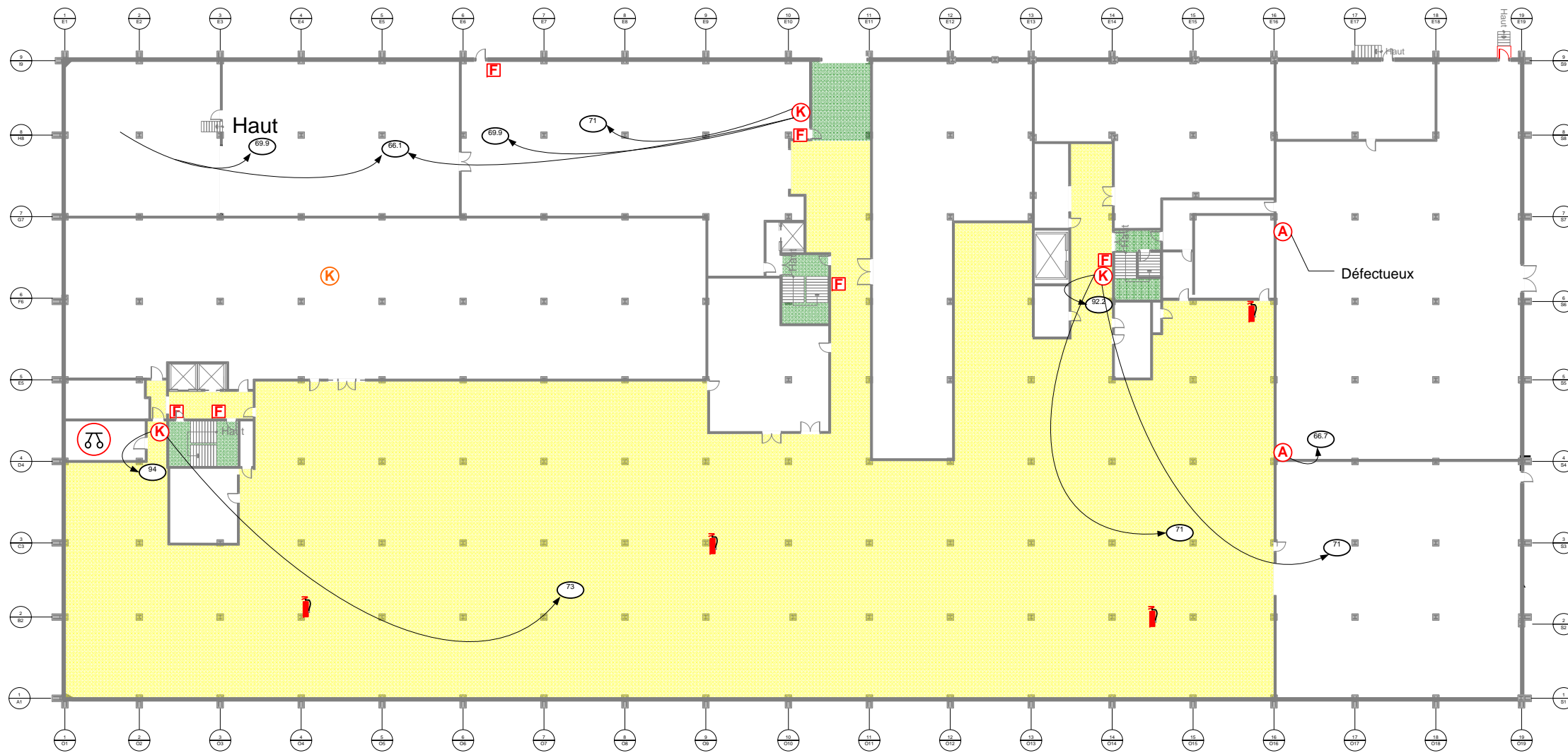


Nom de la rue



### Fire Alarm

**F** Pull Station

**▲** Fire Alarm Panel

**A** Bell

**K** Existing Horn

**K** Mobile Horn

**K** Installed Horn

**↪** From the source to the signal reading

**75** VU meter reading

### Essai Niveau Accoustique

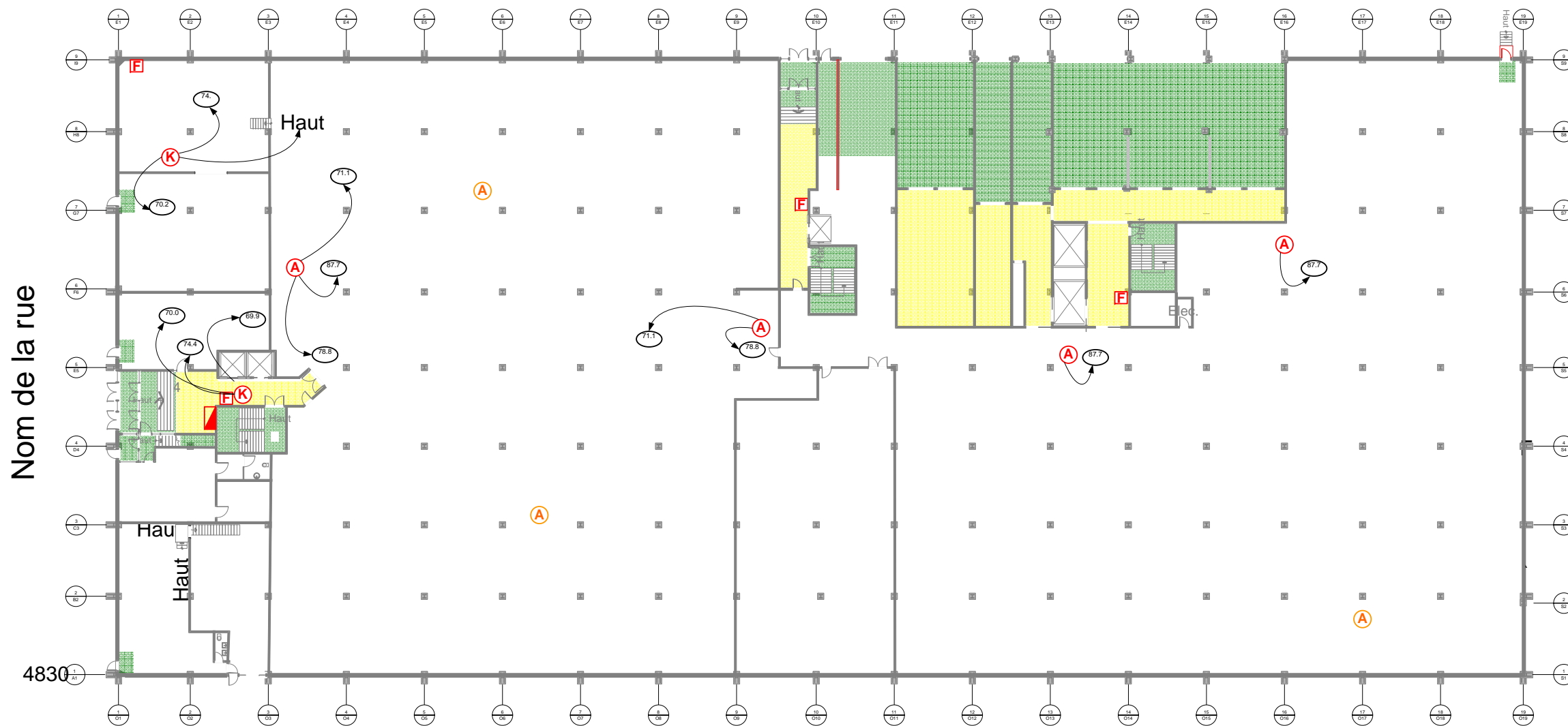


205 rue Bégon  
Auteuil Laval, QC  
H7H 2A4  
450-628-2902

Internet  
site: [www.joliciel.ca](http://www.joliciel.ca)  
courriel: [support@joliciel.ca](mailto:support@joliciel.ca)

Lieu/Site:  
Adresse où l'essai est effectué

Sous-sol  
P-1/4



**Fire Alarm**

**F** Pull Station

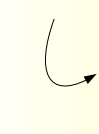
 Fire Alarm Panel

**A** Bell

**K** Existing Horn

**K** Mobile Horn

**K** Installed Horn

 From the source to the signal reading

**75** VU meter reading

**Essai Niveau Accoustique**



205 rue Bégon  
 Auteuil Laval, QC H7H 2A4  
 450-628-2902  
 Internet site: www.joliciel.ca  
 courriel: support@joliciel.ca

**Lieu/Site:**  
 Adresse où l'essai est effectué

Rez-de-chaussée  
 P-2/4



### Sound Pressure Level Horn and Bells

| Value Expressed       | db               | w           | db                          |                             | dba                         | db                             | db                      | db                |                             |
|-----------------------|------------------|-------------|-----------------------------|-----------------------------|-----------------------------|--------------------------------|-------------------------|-------------------|-----------------------------|
| Location              | Pressure Ambient | Power Watts | Reading 1 Pressure Acoustic | Reading 2 Pressure Acoustic | Average Pressure Acoustique | Pressure Acoustic of reference | Level Pressure Acoustic | Différence LPA-PA | Différence To 75db required |
| Sous-sol Est          | 57               | 2           | 71                          | 69.9                        | 70.45                       | 20                             | 25.6704                 | 13.45             | -4.55                       |
| Sous-sol Est          | 57               | 2           | 69.9                        | 66.1                        | 68.00                       | 20                             | 26.2363                 | 11                | -7                          |
| Sous-sol Esc Nord     | 55               | 2           | 94                          | 73                          | 83.50                       | 20                             | 23.8853                 | 28.5              | 8.5                         |
| Sous-sol Esc Sud      | 55               | 2           | 92.2                        | 71                          | 81.60                       | 20                             | 23.9850                 | 26.6              | 6.6                         |
| Sous-sol Local Sud    | 57               | 2           | 66.7                        | 66.7                        | 66.70                       | 20                             | 26.6148                 | 9.7               | -8.3                        |
| RdC Nord-Est          | 55               | 2           | 74                          | 70.2                        | 72.10                       | 20                             | 24.8287                 | 17.1              | -2.9                        |
| RdC Entrée Princ      | 55               | 2           | 74.4                        | 70                          | 72.20                       | 20                             | 24.8155                 | 17.2              | -2.8                        |
| RdC Local             | 55               | 2           | 87.7                        | 71.1                        | 79.40                       | 20                             | 24.1225                 | 24.4              | 4.4                         |
| RdC Local avant Sud   | 55               | 2           | 78.8                        | 71.1                        | 74.95                       | 20                             | 24.4960                 | 19.95             | -0.05                       |
| RdC près Monte Charge | 55               | 2           | 87.7                        | 87.7                        | 87.70                       | 20                             | 23.7145                 | 32.7              | 12.7                        |
| RdC Local Sud         | 55               | 2           | 87.7                        | 87.7                        | 87.70                       | 20                             | 23.7145                 | 32.7              | 12.7                        |
| Local 210             | 55               | 2           | 95.5                        | 76.6                        | 86.05                       | 20                             | 23.7744                 | 31.05             | 11.05                       |
| Local 210             | 55               | 2           | 71.1                        | 64.5                        | 67.80                       | 20                             | 25.5525                 | 12.8              | -7.2                        |
| Local 210             | 55               | 2           | 86.6                        | 86.6                        | 86.60                       | 20                             | 23.7535                 | 31.6              | 11.6                        |
| 2ème Esc Nord         | 55               | 2           | 92.2                        | 73.4                        | 82.80                       | 20                             | 23.9202                 | 27.8              | 7.8                         |
| Local 203 du passage  | 55               | 2           | 70                          | 70                          | 70.00                       | 20                             | 25.1410                 | 15                | -5                          |
| Local 203             | 55               | 2           | 92.2                        | 65.2                        | 78.70                       | 20                             | 24.1720                 | 23.7              | 3.7                         |
| Local 203             | 55               | 2           | 92.2                        | 60                          | 76.10                       | 20                             | 24.3849                 | 21.1              | 1.1                         |
| Local 203             | 55               | 2           | 92.2                        | 69.9                        | 81.05                       | 20                             | 24.0170                 | 26.05             | 6.05                        |
| Local 215 du passage  | 55               | 2           | 84.4                        | 67                          | 75.70                       | 20                             | 24.4222                 | 20.7              | 0.7                         |
| Local 215             | 55               | 2           | 95.5                        | 87.7                        | 91.60                       | 20                             | 23.6031                 | 36.6              | 16.6                        |
| 2ème Près Esc centre  | 55               | 2           | 95.5                        | 95.5                        | 95.50                       | 20                             | 23.5255                 | 40.5              | 20.5                        |
| Local 207 du passage  | 55               | 2           | 65.6                        | 65.6                        | 65.60                       | 20                             | 26.0850                 | 10.6              | -9.4                        |
| Local 207             | 55               | 2           | 95.5                        | 76.6                        | 86.05                       | 20                             | 23.7744                 | 31.05             | 11.05                       |
| <b>Average</b>        |                  |             |                             |                             | <b>78.66</b>                |                                | <b>24.51</b>            | <b>23.41</b>      | <b>3.66</b>                 |
|                       |                  |             |                             |                             | <b>db</b>                   |                                | <b>db</b>               | <b>db</b>         | <b>db</b>                   |

Lp = The difference between the pressure existing at a given time and the pressure balance which exist in the absence of any acoustic vibration

P = Acoustic pressure at the receiving

Pa =Reference sound pressure in Pa


Sound Pressure reading = LPA = P

Standard reference pressure= 20 MPa

The weighted noise level before the test sound bells or horns is 55 or 57 db


$$Lp = 10\text{LOG}(P^2/(Pm \cdot Pa))$$

#### Fire Alarm

 Pull Station


 Fire Alarm Panel

 Bell

 Existing Horn

 Mobile Horn

 Installed Horn

 From the source to the signal reading

 VU meter reading

#### Essai Niveau Accoustique



205 rue Bégon  
Auteuil Laval, QC  
H7H 2A4  
450-628-2902

Internet  
site: www.joliciel.ca  
courriel: support@joliciel.ca

Lieu/Site:  
Adresse où l'essai est effectué

Rapport  
P-4/4